



LAS COLINAS
Golf & Country Club

A world apart



MIMOSA COMMUNITY PLOT 33-16





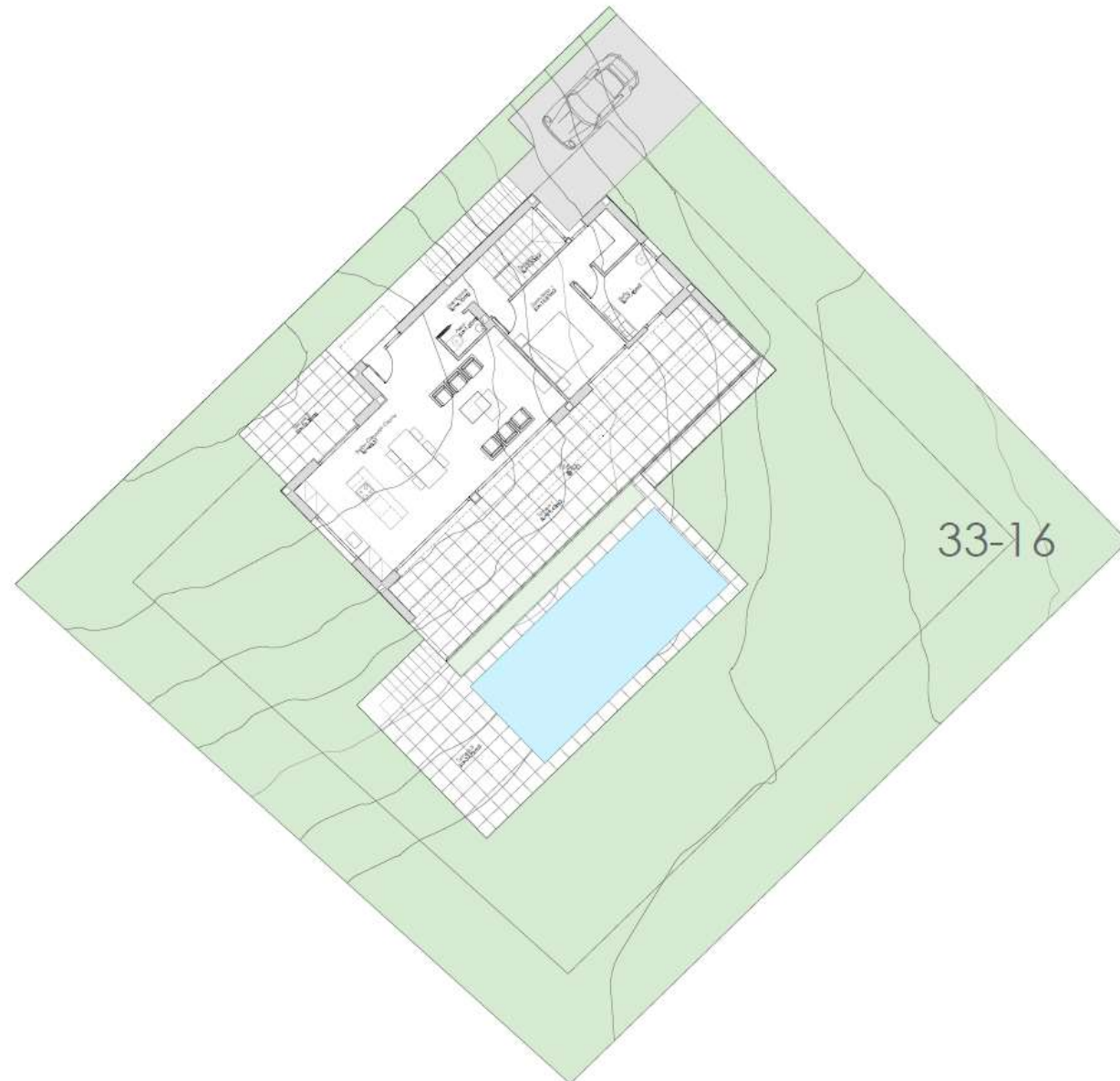
The image is a preliminary draft of the property, and is created by computer as an illustration, but is not binding. The final design may undergo some changes.



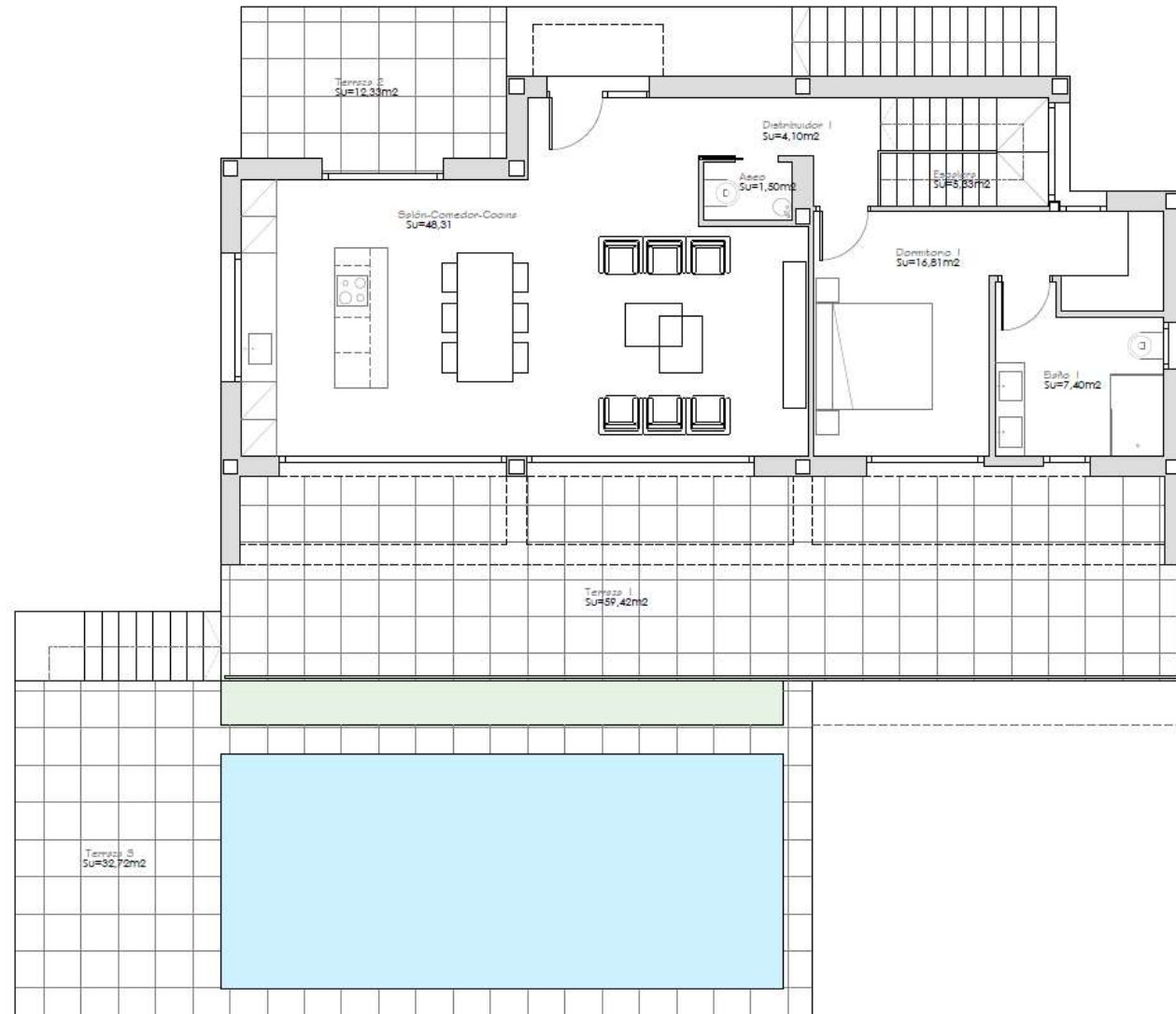
OVER PLOT PLAN



Comunidad
MIMOSA
Community



FIRST FLOOR PLAN

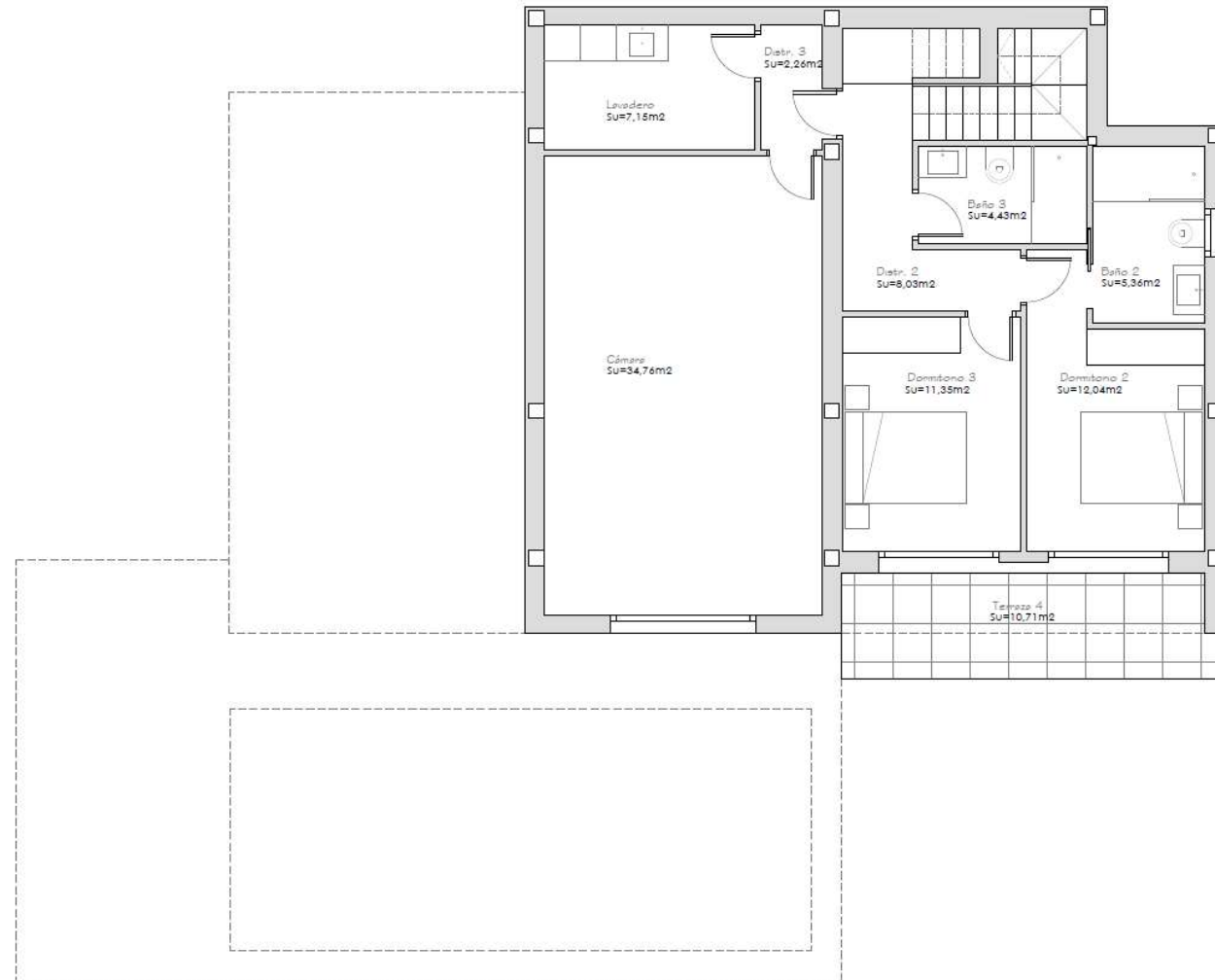


Comunidad
MIMOSA
Community

GROUND FLOOR PLAN



Comunidad
MIMOSA
Community



QUALITY REPORT

Structure

- Reinforced concrete. Which complies with the resistance and durability standards set out under Code EHE-08 and other existing regulations.

Façade and partitions

- External enclosures, built with hollow ceramic bricks and including thermal-acoustic insulation chamber.
- Internal laminated plasterboard partitions.
- Hydraulic mortar on façades, brand WEBER or similar, white colour.

Roof

- Flat roof, not passable; with washed gravel finish, thermal insulation and water proofing.

Floors

- Premium ceramic floor tiling indoor areas, SALONI 90x90 cm.
- Premium non-slip ceramic floor tiling in outdoor areas, SALONI 90x90 cm.

Walls

- Ceramic walls tiling around shower and bath areas in bathrooms, SALONI 90x90 cm.
- Smooth acrylic paint finish for indoor walls and ceilings.

Outdoor carpentry

- Outdoor carpentry aluminium, with Thermal Break Bridge.
- Windows with double glazing.
- Motorized aluminium blinds in bedrooms.

Indoor carpentry

- Indoor doors, colour lacquered wood.
- Built-in wardrobes, colour lacquered wood, line on the inside with melamine board.

Heating and air conditioning systems

- Full installation of conduit and heat pump.
- Electric underfloor heating in bathrooms.

QUALITY REPORT

Kitchen

- Fully fitted kitchen.
- Appliances Siemens:
 - Microwave
 - Washing machine
 - Cooker hood
 - Fridge Int
 - Freezer Int
 - Dishwasher
 - Induction hob
 - Oven
- Kitchen worktop with man-made stone surfaces, brand SILESTONE INTEGRITY WHITE ZEUS.
- Stainless steel sink.

Sanitary fittings

- Drainage network using acoustic PVC.
- Cold and hot water distribution system using reticulated polyethylene pipes.
- Bathroom fitting. Toilet DURAVIT STARCK 3. Chrome single lever taps, HANSGROHE LOGIS.
- Bathroom furniture with integrated sink.

Electrical installation

- Electrical installation for high electrification level.
- Telephone and televisión connection in living room, kitchen and bedrooms. National and satellite TV channel reception. Switches and connectors Bticino.
- Video door phone.
- Motorized vehicles door.
- Interior and exterior LED lighting.

QUALITY REPORT

Swimming pool

■ Individual swimming pool (9,6 x 4). Saline purification and autofill system, including:

- Excavation
- Construction of the pool
- Stair
- Mozaic tiling
- Pump and filter system
- Electric, sewage and water connection
- Tiled edge
- 2 spot lights
- Salt system for pool
- Exterior shower
- Heating pump preinstallation

Included in price

- Osmosis.
- Standard garden.
- Internet connection, VEGAFIBRA (maintenance for 1 year).

Not Included in price

- Heating pump: 8.800€.
- Pool cover: 19.000€

PRICE & PAYMENT TERMS

MIMOSA 33-16

Plot Surface	Built Area	Price without TAXES
835	165	915.000 €

Method	Amount	VAT 10%	Total
Reservation:	6.000 €	600 €	6.600 €
Sales contract:	274.500 €	27.450 €	301.950 €
Commencement of works:	183.000 €	18.300 €	201.300 €
Completion at notary:	451.500 €	45.150 €	496.650 €
TOTAL	915.000 €	91.500 €	1.006.500 €

*Notary and registration taxes not included.

**Optionals not included in price.